

# HONEYWELL NAVIGATION SERVICES

FMS Guided Visual Approaches



Honeywell

# HONEYWELL NAVIGATION SERVICES

## HONEYWELL FMS GUIDED VISUAL APPROACHES AVAILABLE IN OPTIONAL DATABASE

FMS Guided Visual Approaches are available as an optional navigation database for many aircraft types.

## WHAT ARE FMS GUIDED VISUAL APPROACHES?

Titled "RNAV H," these procedures are developed and coded into the FMS navigation database by Honeywell to provide lateral and vertical guidance to the runway during visual maneuvers.

## STABILIZED APPROACHES

The intent is to improve the likelihood of a stable approach by providing a precise, repeatable, lateral and vertical flight path which can be fully coupled to the autopilot or hand flown.

## RADIUS TO FIX LEGS

Honeywell visual approaches utilize Radius to Fix (RF) legs which provide a precise track over the ground to align the aircraft while observing known airspace restrictions.

## AIRPORTS

Honeywell has included numerous visuals and is adding new ones each cycle. They include airports within and outside of the US.

A current list of visuals is available on the Honeywell Navigations Services website: [FMS Guided Visuals](#)

## ELIGIBLE AIRCRAFT

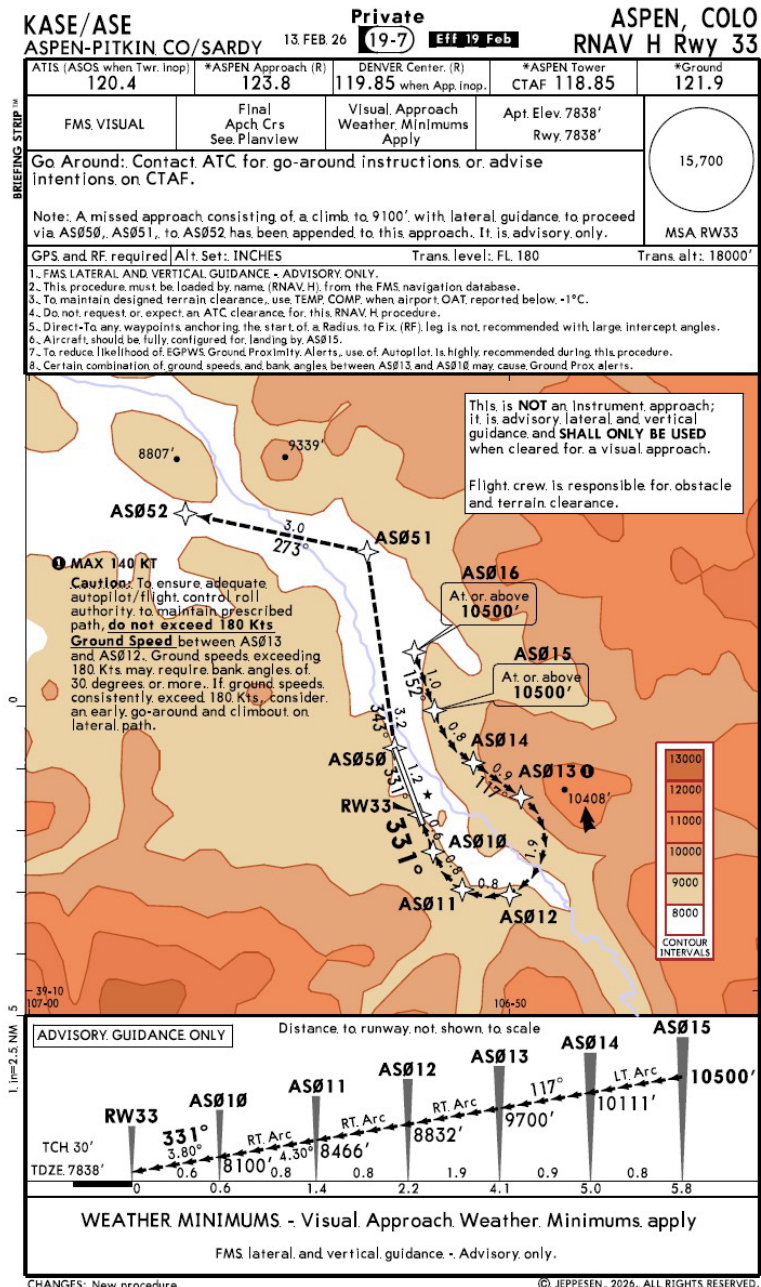
- Bombardier Global Express
- Cessna Sovereign, Citation X
- Dassault Falcon 6X, 7X, 8X, 10X, 2000EX EASy, 900EX EASy, 900C/EX
- Embraer 170/190, ERJ-135/145
- Gulfstream G450/550/650/500/600, G700/800 G-V, G-IV\*
- Hawker 4000
- Pilatus PC-12NG/NGX, PC-24

\*RF leg display available with LCD upgrade

## FUTURE AIRPORTS

Customer feedback guides our future list of visuals. If you have any questions or feedback regarding these procedures, or recommendations for additional airports, contact us at: [FTS@Honeywell.com](mailto:FTS@Honeywell.com).

- WSSL RWY 3/21
- KBUR RWY 15/33
- KAPC RWY 19R/24



See a video of our visual at KTEB in action [here](#)

## WHAT CAN STABILIZED APPROACHES DO FOR YOU?

- Prevent over-banking with potential stall.
- Help maintain orientation during moonless nights.
- Prevent steep approaches which can lead to:
  - Additional brake wear
  - Noise from max thrust reversers
  - Runway overrun



## JEPPESEN CHARTS

Jeppesen charts are available on most forward displays and the Foreflight app. These charts are also located at the [Honeywell Pilot Gateway](#) in a PDF format.

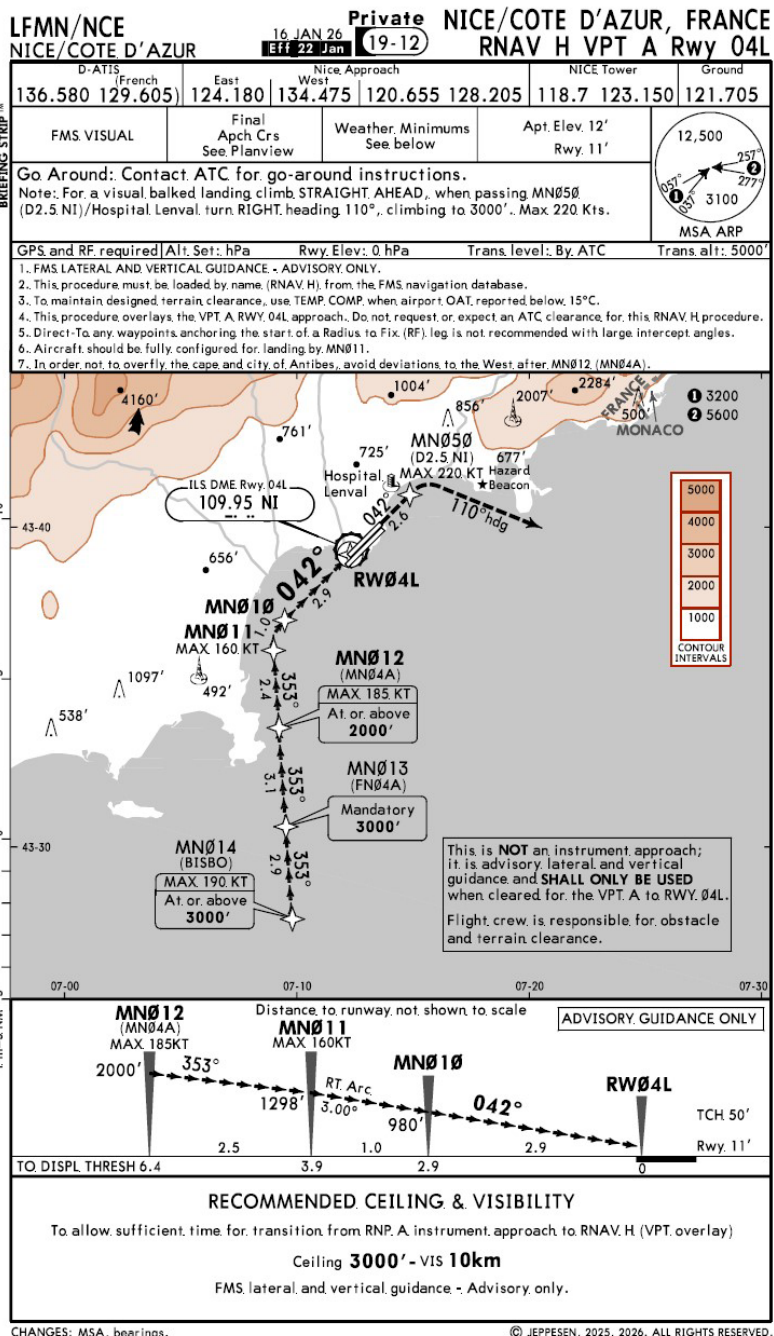
## HONEYWELL NAVIGATION SERVICES

FMS guided visual approaches are part of the **Honeywell Navigation Services** suite of offerings. Other offerings include:

- Required navigation performance - authorization required (RNP-AR) approaches
- Advanced NAV (A-NAV) approaches
- RNP-AR consultancy (to facilitate the RNP-AR letter of authorization)
- Private FMS guided visual approach development (FGV)

## HONEYWELL AEROSPACE

Honeywell is a leading global provider of integrated avionics, engines, systems and service solutions for aircraft manufacturers, airlines, business and general aviation, military, and airport operations.



**For More Information**

To subscribe, contact our database service team at [DSA@Honeywell.com](mailto:DSA@Honeywell.com)

For more technical information, please contact our flight technical team at [FTS@Honeywell.com](mailto:FTS@Honeywell.com)

**Honeywell Aerospace**

1944 East Sky Harbor Circle  
Phoenix, AZ 85034  
[aerospace.honeywell.com](http://aerospace.honeywell.com)

N61-3190-000-002 | 4/26  
© 2026 Honeywell International Inc.

**THE  
FUTURE  
IS  
WHAT  
WE  
MAKE IT**

**Honeywell**